

# Progress on SDG indicator 5.5.1b

(women's representation in local government)

---

IAEG-GS

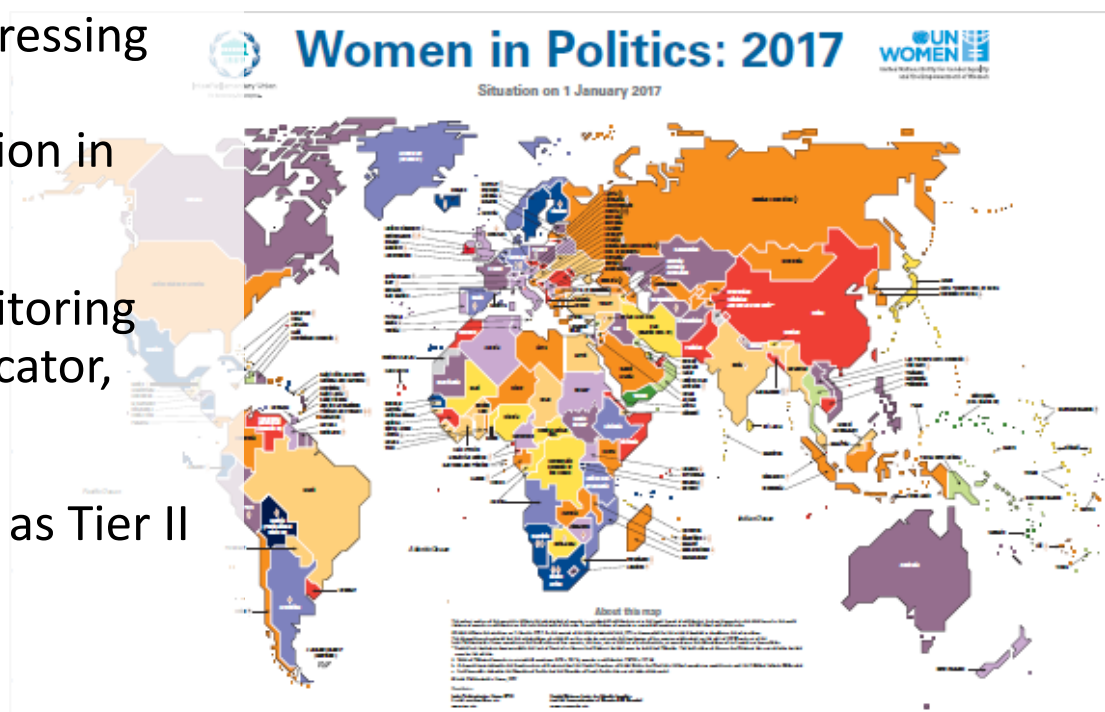
Tokyo, Japan, 13 November 2018

Ionica Berevoescu,  
Policy Specialist, Local Government  
UN Women

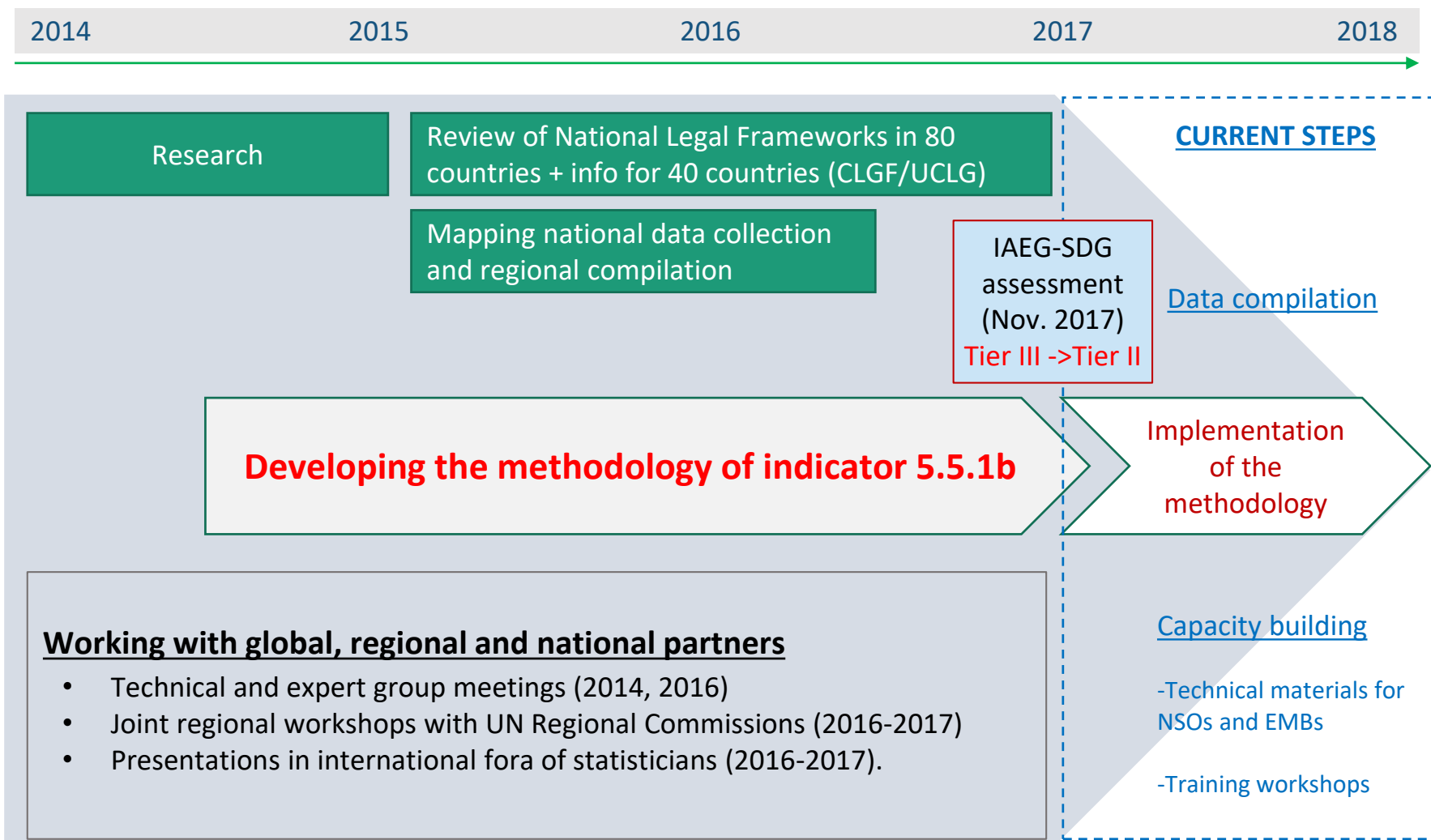
---

# The SDG indicator 5.5.1b

- New global indicator addressing the data gap on women's proportional representation in local government.
- Included in the SDG monitoring framework as Tier III indicator, under Goal 5, Target 5.5.
- Reclassified by IAEG-SDG as Tier II in November 2017.



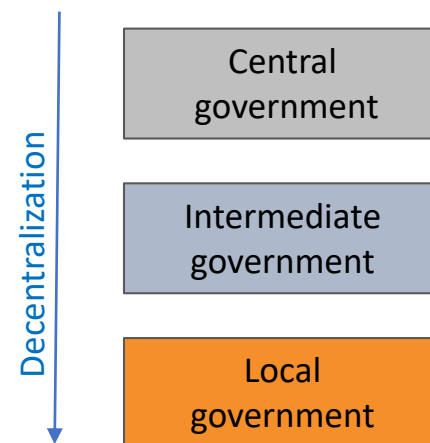
# Steps undertaken by UN Women to develop the methodology of the indicator



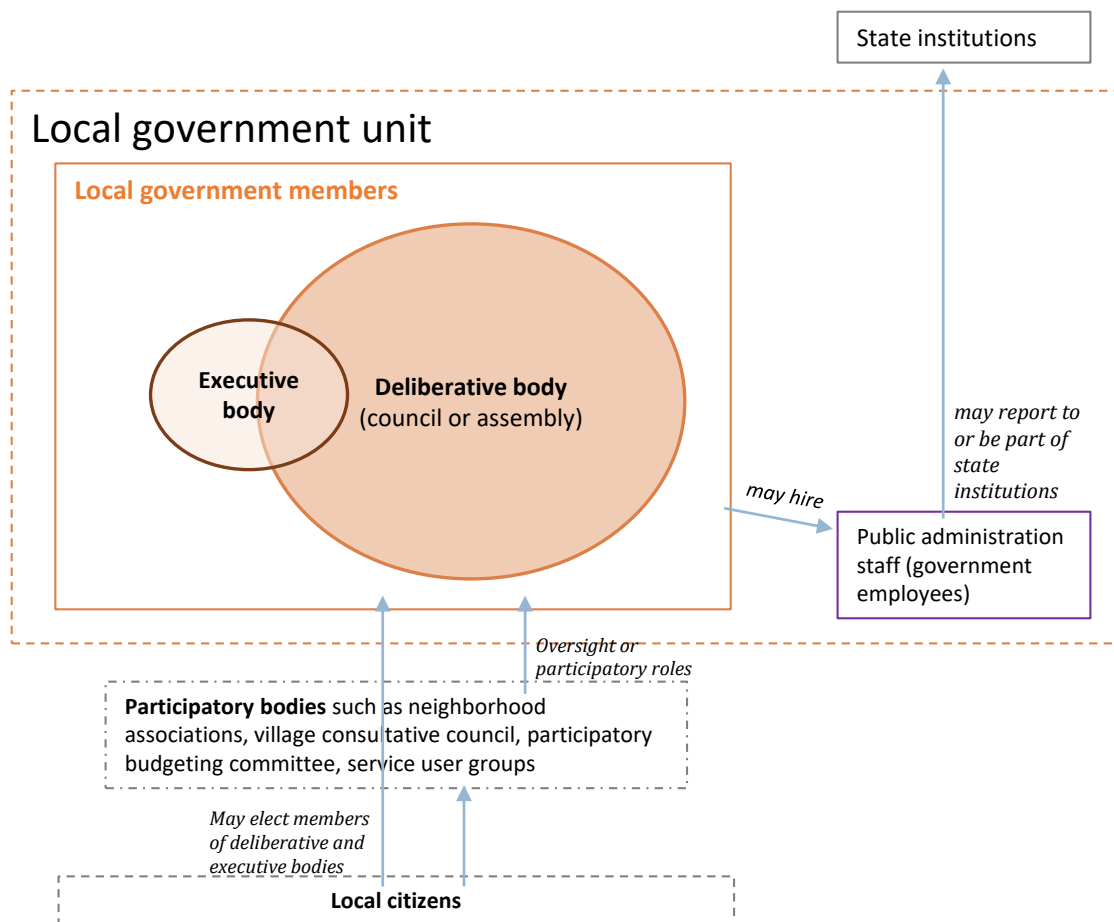
# Understanding local government: Common features beyond diversity

- **National legal framework** provides for the existence of and regulates local government.
- A result of **decentralization**, a process of transferring some **legislative, executive, financial** and **administrative** powers from the central government to sub-national units of government distributed across the territory of a country.
- The sphere of local government is closest to the **people mandated to serve**.
- A **formal** institutional organization of local governments, each local government unit consisting of a **deliberative body** and an **executive body**.

## Three spheres of government



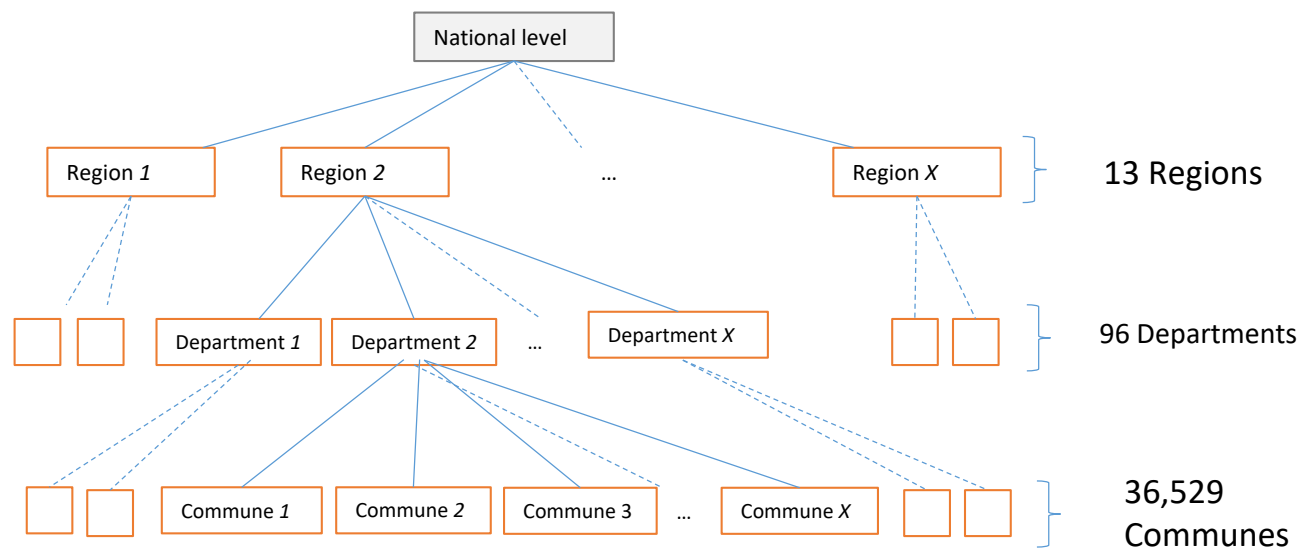
# The composition of local government units



Source: Adapted from concepts discussed at the Technical Meeting on Women's Political Participation at the Local Level, UN Women, New York, 24-25 November 2014.

# On diversity: local government organization by tiers

- Local government may be organized in 1 or more tiers/levels
- For example, local government in France is organized in three tiers:



Source: UN Women Review of Local Government Organization.

# Some examples:

## France

State structure: *Unitary*

Central Government



## Norway

State structure: *Unitary*

Central Government



## Costa Rica

State structure: *Unitary*

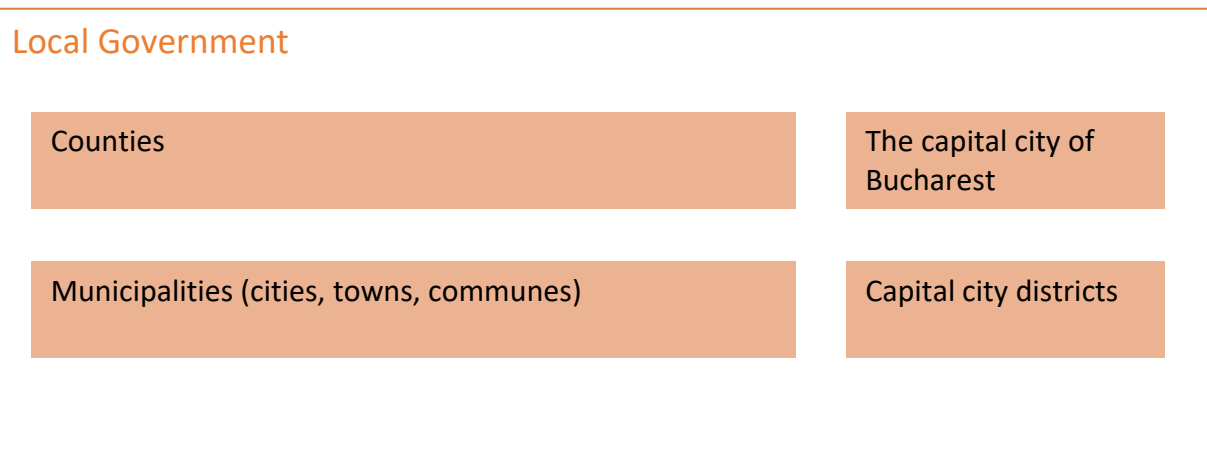
Central Government



## Romania

State structure: *Unitary*

Central Government



Source: UN Women Review of Local Government Organization.

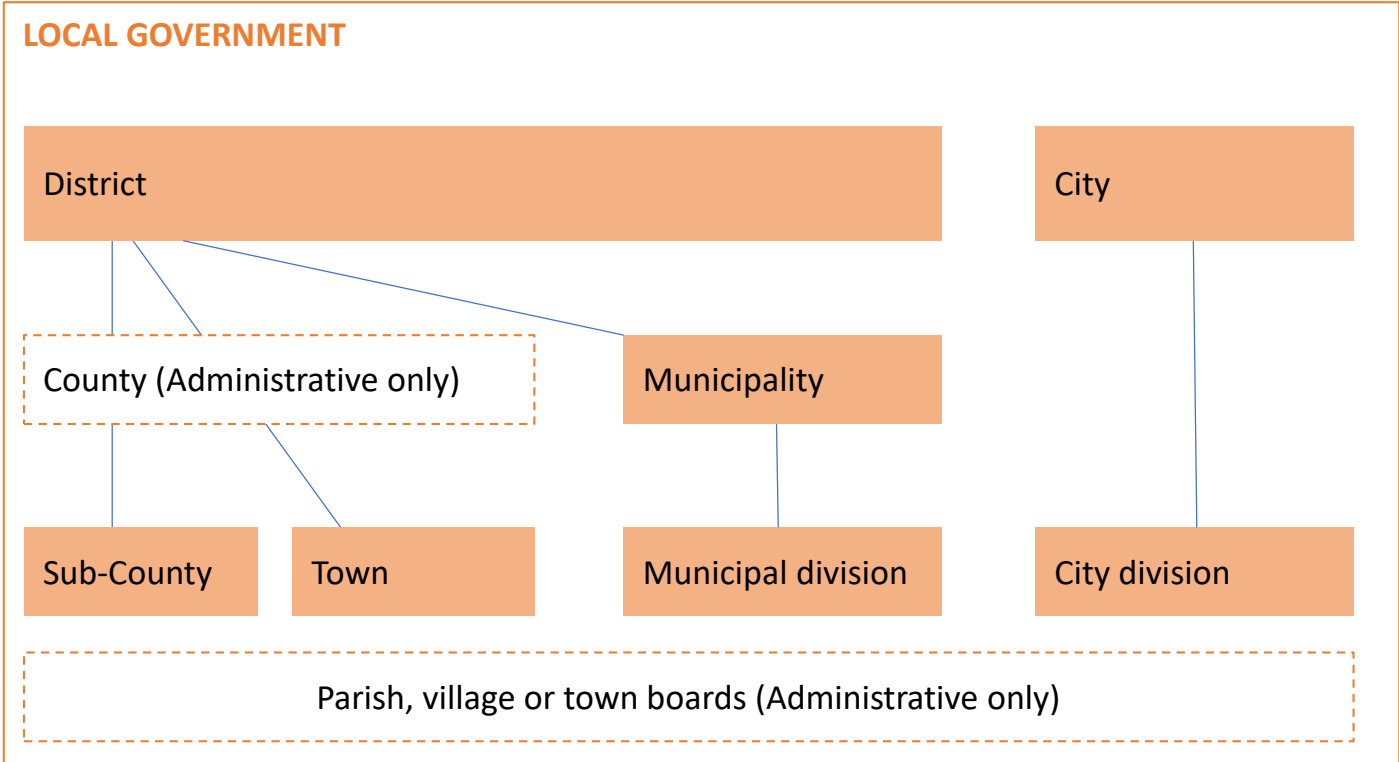


# Uganda

State structure: *Unitary*

Central Government

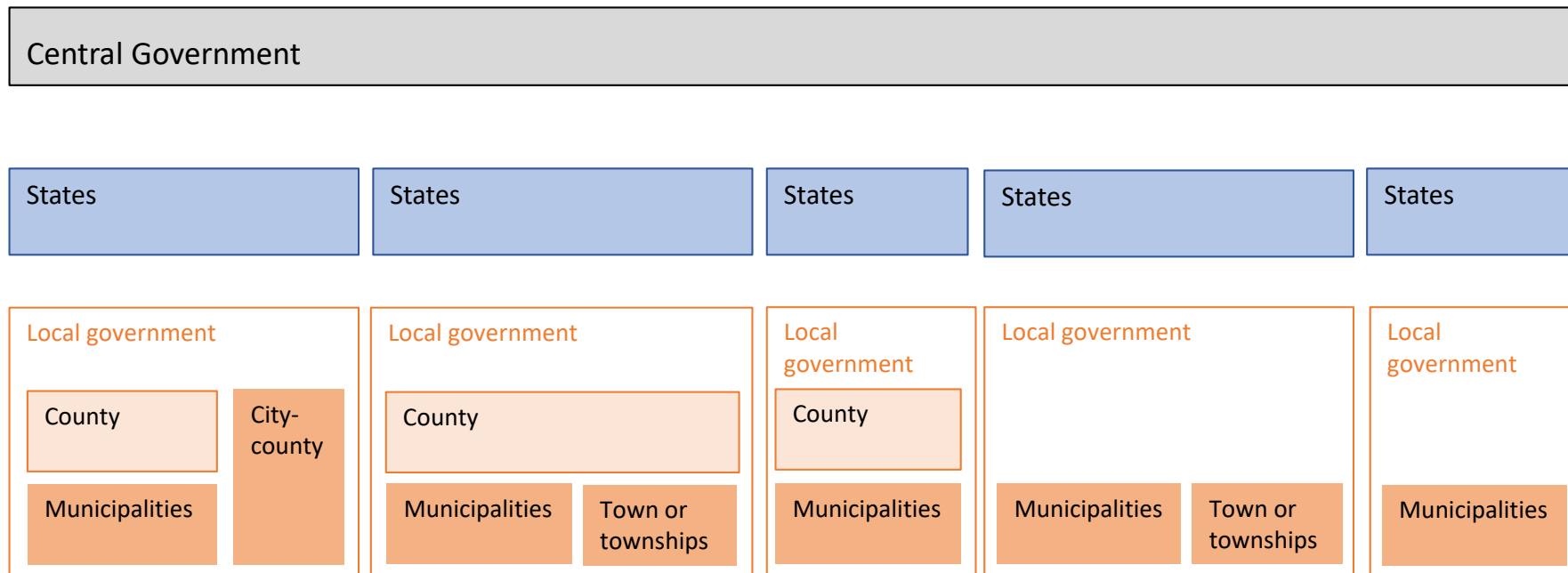
Regional Government (Legal provisions that it could be formed but non-existent in practice)



Source: UN Women Review of Local Government Organization.

# United States of America

State structure: *Federal system*



Source: UN Women Review of Local Government Organization.

# India

State structure: *Federation*

Central Government

## Intermediate sphere of government

24 States and 2  
Union territories

3 States and 2  
Union territories

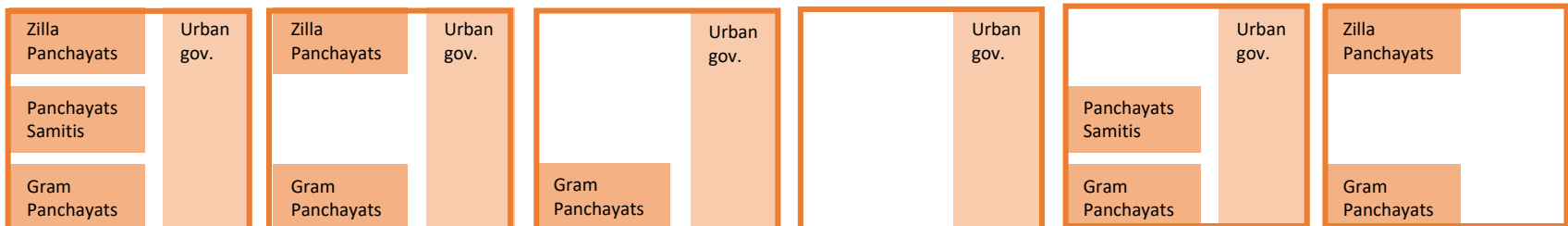
2 States

1 State and 1  
Union territory

1 Union territory

1 Union territory

## Local Government



Source: UN Women Review of Local Government Organization.

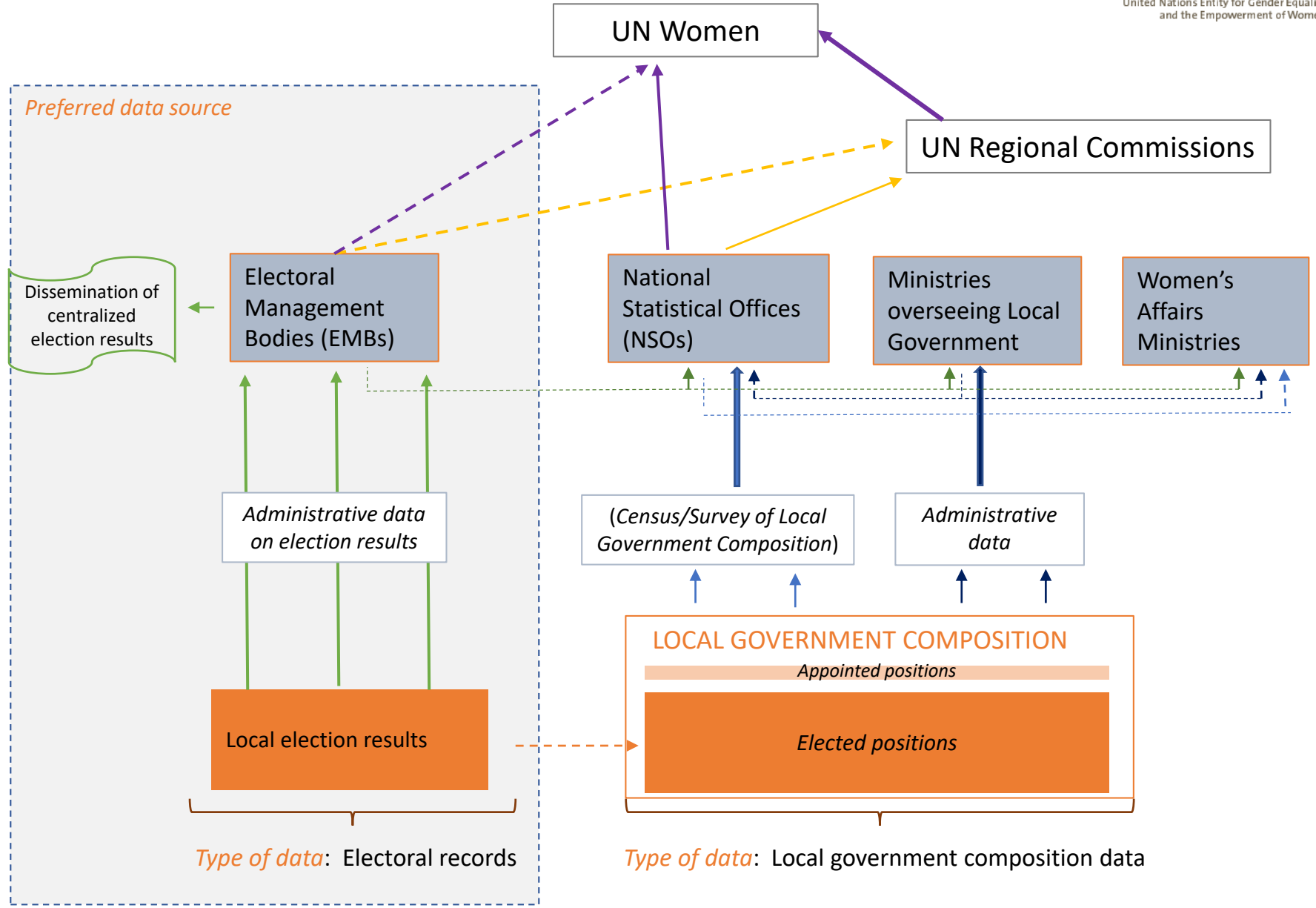
# Ensuring comparability: definition of local government

- Existing statistical definition of local government: 2008 SNA (System of National Accounts)
  - Distinction between central, state and local government (para 4.129).
  - Local government consists of local government units, defined by SNA as “institutional units whose fiscal, legislative and executive authority extends over the smallest geographical areas distinguished for administrative and political purposes” (para 4.145).
- Identification of local government based on national legal framework.

# Ensuring comparability: the scope of the indicator

- **All tiers of local government** as specified by national legal frameworks.
- Positions in **deliberative bodies**
  - Mirrors existing indicators for national government;
  - The great majority of local government members.
- **Elected** positions only
  - Most positions in local government
  - Persons elected on openly contested seats, reserved seats or through a candidate quota.
  - Captures political participation and accountability to citizens
  - Low cost data sources

# Sources and flow of data for SDG indicator 5.5.1b



Type of data: Electoral records

Type of data: Local government composition data

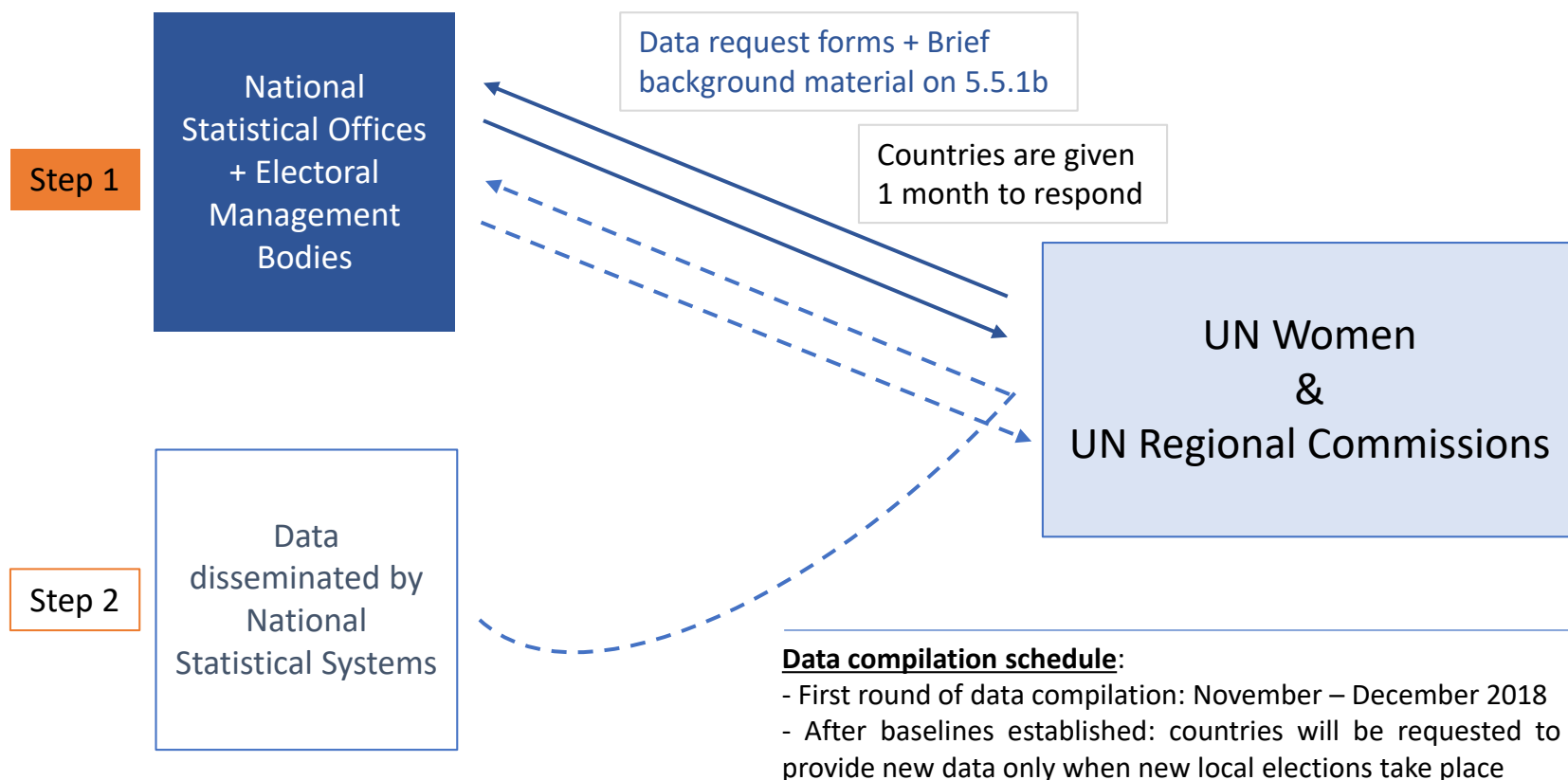
# First global data compilation: what and how?

- The indicator is measured as:

$$= \frac{\textit{Elected positions held by women in deliberative bodies of local government}}{\textit{Elected positions held by women and men in deliberative bodies of local government}} \times 100$$

- Data requirements:
  - Number of elected positions held by women and men in deliberative bodies of local government disaggregated by tiers
  - EMBs as preferred source of data
  - Reference time: most recent local elections
- Customized data request forms
- Assessment after first global data compilation

# Data reporting mechanism for SDG indicator 5.5.1b





# Improving the availability and quality of data

- EMB's technical capacity and mandate to produce and disseminate sex-disaggregated data on election results;
- Integrate electoral administrative data in the NSOs statistical activities:
  - Statistical acts and statistical plans + national development plans
  - Partnership between the NSOs and EMBs:
    - Quality check of data through process – candidate forms that include “sex” as key variable; databases maintained; consistency with other products developed by NSOs;
    - Regular and smooth sharing of data.
  - Data sharing and coordination within the NSSs to avoid duplication of data collection efforts and inconsistent data sets;
  - Data dissemination and data integration.

**Thank you**